



# Industrial Services

Ceramic and Rubber Lining



Solutions for corrosion, abrasion,  
chemicals and waterproofing

## Industrial Services

We specialise in the supply and application of protective coatings, linings and chemical construction products to industry, internationally.

This includes the supply and application of high-performance product formulations offering protection from corrosion, abrasion, chemicals and water. Our main goal is to develop ongoing relations by maintaining a focus on improving our customer's assets, offering services throughout the complete asset life cycle



### Applications include:

- Tank Linings
- Chutes and hoppers
- Residential / Commercial / Remedial Waterproofing
- Rubber and Ceramic Linings Crack Injection - Chemical Concrete Repair
- Pulley lagging
- Safety Line Marking
- Chemical and Hydrocarbon Bunding Containment Ponds
- Mill lining - onsite/workshop;
- HDPE/UHMWPE Sheet Linings;
- Onsite lining services including site and wear inspection;
- Workshop facility complete with abrasive blasting and painting capability.

## Key Coating Technology: Niobex

**Niobex** is a Niobium-based paint that protects surfaces in contact with corrosive liquids or gases. It was developed to be applied in highly aggressive environments and to protect components suffering from chemical attacks and extreme corrosion conditions.

**Niobex** contains Niobium, a chemical element with significant anti-corrosive properties, making it the most resistant coating currently available in today's market. It provides high resistance, high durability, and results in substantial long-term cost reductions for businesses.

**Niobex** is ideal for internal and external protection of industrial equipment such as pumps, separators, mixers, pipes, tanks, etc.

## Applications



### Niobex:

High performance paint, based on Niobium oxide. Easy to apply, protects surfaces and can be applied on existing corrosion



### Thermal Spray (Niobium):

Provides superior corrosion protection at higher temperature applications



### Magnex:

Technology that replicates the expected oxidation seen in the field. It creates a permanent chemical barrier.



### NioManta:

Combines Niobex and flexible, non-toxic "manta", which increases the corrosion protection in heavily corroded materials.



## Key Coating Technology: Niobex

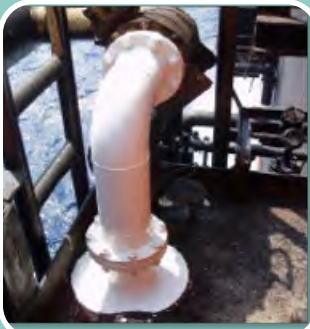
**Niobex** is a Niobium-based paint that protects surfaces in contact with corrosive liquids or gases. It was developed to be applied in highly aggressive environments and to protect components suffering from chemical attacks and extreme corrosion conditions.

**Niobex** contains Niobium, a chemical element with significant anti-corrosive properties, making it the most resistant coating currently available in today's market. It provides high resistance, high durability, and results in substantial long-term cost reductions for businesses.

**Niobex** is ideal for internal and external protection of industrial equipment such as pumps, separators, mixers, pipes, tanks, etc.



## Applications



**Niobex:**  
High performance paint, based on Niobium oxide. Easy to apply, protects surfaces and can be applied on existing corrosion



**Thermal Spray (Niobium):**  
Provides superior corrosion protection at higher temperature applications



**Magnex:**  
Technology that replicates the expected oxidation seen in the field. It creates a permanent chemical barrier.



**NioManta:**  
Combines Niobex and flexible, non-toxic "manta", which increases the corrosion protection in heavily corroded materials.

## Key Coating Technology: Niobex

**Niobex** is a Niobium-based paint that protects surfaces in contact with corrosive liquids or gases. It was developed to be applied in highly aggressive environments and to protect components suffering from chemical attacks and extreme corrosion conditions.

**Niobex** contains Niobium, a chemical element with significant anti-corrosive properties, making it the most resistant coating currently available in today's market. It provides high resistance, high durability, and results in substantial long-term cost reductions for businesses.

**Niobex** is ideal for internal and external protection of industrial equipment such as pumps, separators, mixers, pipes, tanks, etc.



## Applications



**Niobex:** High performance paint, based on Niobium oxide. Easy to apply, protects the surfaces and can be directly applied on existing corrosion.



**Thermal Spray (Niobium):** Provides superior corrosion protection at higher temperature applications.

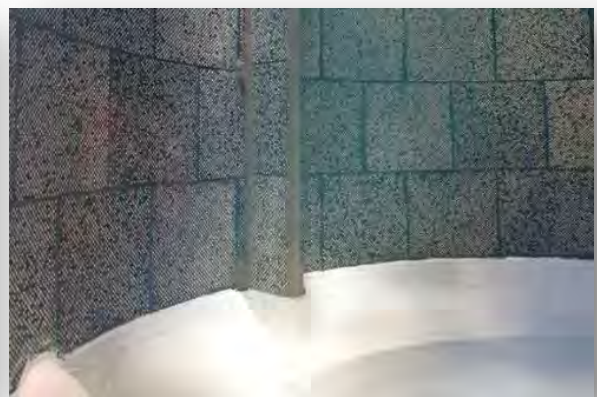
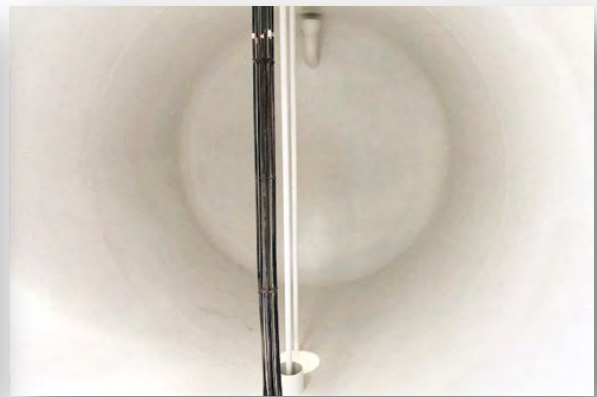


**Magnex:** Technology that replicates the expected oxidation seen in the field. It creates a permanent chemical barrier.



**NioManta:** Combines Niobex and flexible, non-toxic "manta", which increases the corrosion protection in heavily corroded materials.

# Tank Linings



# Residential / Commercial / Remedial Waterproofing



# Rubber and Ceramic Linings





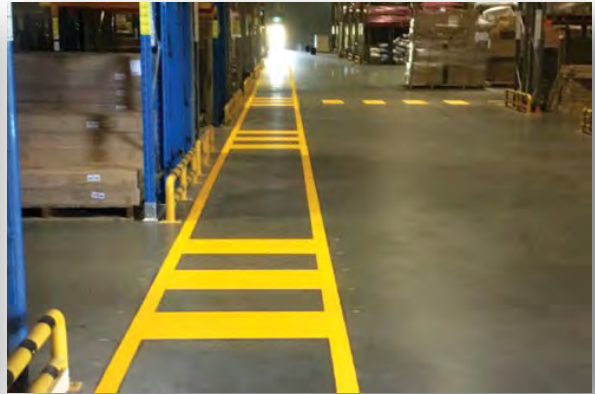
## Crack Injection | Chemical



## Concrete Repair



## Safety Line Marking



## Chemical and Hydrocarbon Bunding



## Containment Ponds



**XR3 Pty Ltd**

ABN: 14 621 408 786  
ACN: 621 408 786

Level 6, 444 Queen Street  
BRISBANE QLD 4000